



Louisiana Valve Source

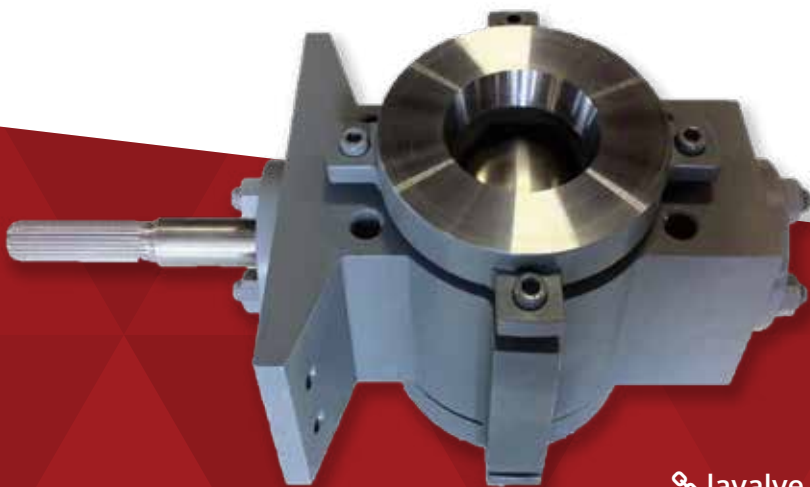


## LV 690 Rotary Valve

The LV 690 utilizes a heavy duty construction which is suitable for both modulating service & on-off applications, and is designed to be used with ANSI CL600 or CL900 connections

### Flexible Options

The flangeless valve body is typically installed in gas transmission or liquid pipelines. The valve is available with either a single or dual ball seal. The single seal offering provides tight shutoff in the forward flow direction. The dual seal offering combines tight shutoff with bidirectional flow capability.



### Key Advantages

- ✓ Manufactured in the US
- ✓ Available in 4" - 24" Sizes
- ✓ Capable of High Differential Pressure Operation
- ✓ Single or Dual Ball Seal
- ✓ Keyed or Splined Shaft Available for Diverse Actuator Applications
- ✓ Optional End Connections for 3-Piece Valve Configuration
- ✓ Available Sour Gas Service Trim & Seal Upgrades

Contact Us Today!

[lavalve.com](http://lavalve.com) | [337.856.9100](tel:337.856.9100) | [sales@lavalve.com](mailto:sales@lavalve.com)